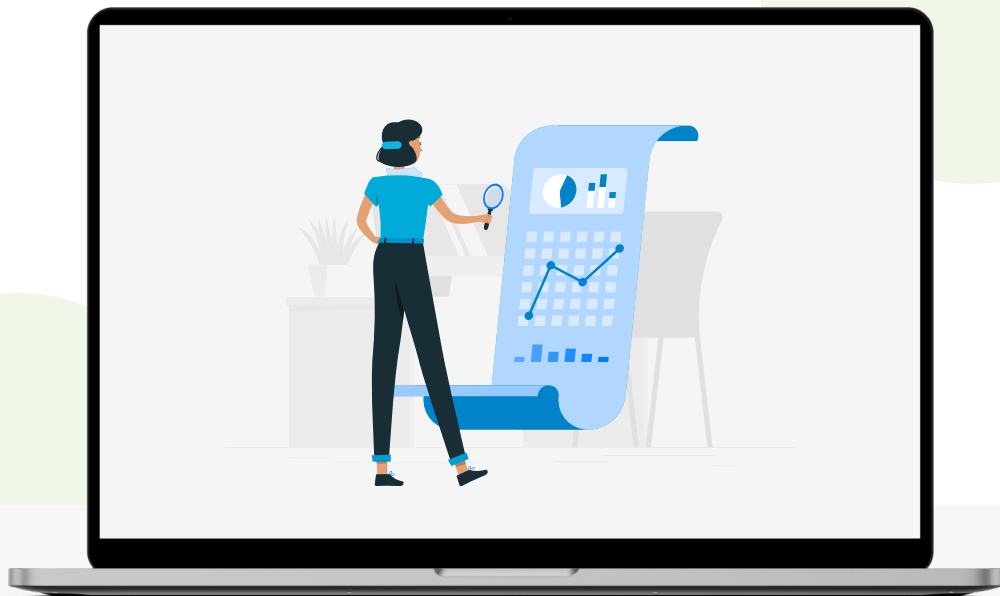




# Universal Screening and Progress Monitoring Made Easy

---



## What is easyCBM?

*easyCBM*® is a proven online benchmark and progress monitoring assessment and reporting system designed as an integral part of the Response to Intervention model for Grades K-8. Developed by Dr. Gerald Tindal and Dr. Julie Alonzo of the University of Oregon, *easyCBM* provides key data needed for establishing district or school-wide intervention and making informed decision about placement, instruction, and exit from intervention programs. Colorful and easy-to-read reports at the individual, classroom, school, and district levels provide actionable data to monitor student progress of implemented content strategies. *easyCBM* delivers the tools you need to inform instruction and intervention.

### *easyCBM*:

- ✓ Enables educators to **screen, progress monitor, and plan interventions** in early literacy, vocabulary, reading comprehension, and mathematics
- ✓ Offers a wide range of **reading comprehension** text types, including informational and literary text
- ✓ Consists of measures **developed using Item Response Theory (IRT)**, assuring comparability of alternate forms. Variation in performance can be attributed to the student, not measurement error
- ✓ Provides **computer administration options** so student performance and progress can be monitored in real time
- ✓ Includes a **variety of reports** for teachers and administrators to assist with identifying students at risk, organizing students into manageable skill groups, monitoring student progress to provide target aim lines for improvement, and analyzing system or school-wide performance
- ✓ Offers **nationally stratified norms**



## CBM Skills

Now included with *easyCBM*, *CBMSkills* allows students to practice math and master standards-aligned math skills. Its modules progress through major math topics that coincide with classroom instruction in preparation for *easyCBM*'s benchmarks and progress monitoring measures. Using gamification and badges earned for achievements, students have fun practicing what they are learning while receiving instant feedback. Easy-to-read reports allow teachers to diagnose error patterns and identify student gaps in learning. Each practice question includes audio and can be read to the student in 14 languages.



## Write Right Now

## Write Right Now

With *easyCBM*'s *Write Right Now*, teachers can easily structure, assign, and grade student writing efficiently in any content area. Resources such as graphic organizers, outlines, and rubrics can be incorporated for use throughout each student's writing process. From beginning to end, teachers can guide their students through each step of planning, drafting, revising, and finalizing their writing.



# Tiered Instruction Made Easy!

easyCBM facilitates instruction and intervention at every tier of Response to Intervention through a district-level assessment system. This system includes benchmarking assessments, progress monitoring assessments, and comprehensive reporting capabilities. The Reading and Mathematics CBMs examine a full year of academic growth, enabling you to make informed intervention and instructional planning decisions.

## Tier 1

easyCBM provides Universal Screening/Benchmark assessments for all students.

- Screen students up to three times a year
- Identify students at risk
- Plan for instruction

## Tier 2

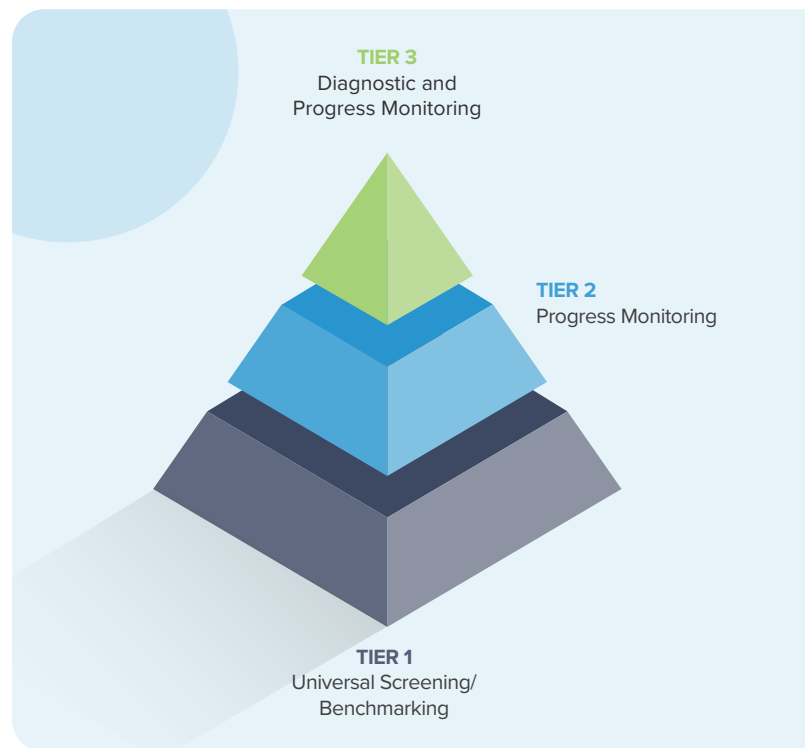
easyCBM provides real-time data to efficiently and effectively connect each student with valid interventions

- Group students based on instructional needs
- Administer tests online with groups of students
- Establish goals and monitor progress of individuals or student groups

## Tier 3

easyCBM provides focused, reliable data at an item level to help customize interventions and enhance the rate of student learning.

- Analyze item-level diagnostic data
- Set aim lines for monitoring improvement
- View longitudinal information for referral decisions



“

*“The ease and simplicity of using easyCBM to get rich data not only helps to support instruction in all tiers of support, but also provides quick results for teachers to determine deficits to attack early with appropriate intervention.”*

– Dr. Wendy G. Crotwell, Elementary District RTI Specialist, Richland School District Two

## Included Measures

The chart below summarizes the Measures available by grade level through *easyCBM*. Reading measures are based on the “Big Five” constructs from the National Reading Panel, and *easyCBM* includes additional easily accessible Reading measures. Math measures are aligned to standards taught throughout the school year and include audio administration.

READING										
Measure Name	Administration Time <sup>B</sup>	K	1	2	3	4	5	6	7	8
Letter Names	1 minute	✓	✓							
Letter Sounds	1 minute	✓	✓							
Phoneme Segmenting	1 minute	✓	✓							
Word Reading Fluency	1 minute	✓	✓	✓						
Passage Reading Fluency	1 minute		✓	✓	✓	✓	✓	✓	✓	✓
Vocabulary	10–15 minutes			✓	✓	✓	✓	✓	✓	✓

READING COMPREHENSION											
Measure Name	Description	Administration Time <sup>B</sup>	K	1	2	3	4	5	6	7	8
Basic Reading	25 multiple-choice reading items, testing students’ skill in understanding short literary text (10 items), informational text (10 items), and read to perform a task (5 items). The tests are organized into short sections, each with an item prompt (story, graph, table, etc.) followed by 5 questions.	20 minutes				✓	✓	✓	✓	✓	✓
Proficient Reading	Multiple choice reading items testing students’ literal, inferential, and evaluative comprehension	30 minutes			✓	✓	✓	✓	✓	✓	✓

SPANISH LITERACY										
Measure Name	Administration Time <sup>B</sup>	K	1	2	3	4	5	6	7	8
Spanish Syllable Segmenting	1 minute	✓	✓							
Spanish Syllable Sounds	1 minute	✓	✓							
Spanish Word Reading	1 minute		✓	✓						
Spanish Sentence Reading	1 minute		✓	✓						
Spanish Vocabulary	15 minutes			✓	✓	✓	✓	✓	✓	✓

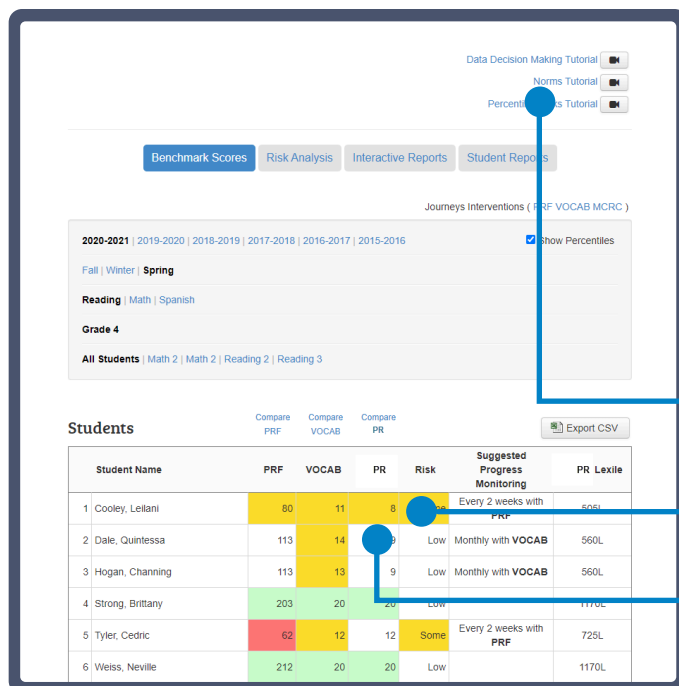
MATHEMATICS										
Measure Name	Administration Time <sup>B</sup>	K	1	2	3	4	5	6	7	8
Basic Math Benchmark (B)	15–30 minutes	✓	✓	✓	✓	✓	✓	✓	✓	✓
Numbers and Operations (PM)	8–15 minutes	✓	✓	✓	✓	✓	✓	✓		
Geometry (PM)	8–15 minutes	✓	✓		✓					
Measurement (PM)	8–15 minutes	✓		✓		✓				
Numbers and Operations, Algebra (PM)	8–15 minutes		✓	✓	✓	✓	✓		✓	
Geometry, Measurement, Algebra (PM)	8–15 minutes						✓		✓	
Algebra (PM)	8–15 minutes							✓		✓
Numbers and Operations, Ratios (PM)	8–15 minutes							✓		
Numbers and Operations, Algebra, Geometry (PM)	8–15 minutes								✓	
Geometry, Measurement (PM)	8–15 minutes									✓
Data Analysis, Numbers and Operations, Algebra (PM)	8–15 minutes									✓
Proficient Math Benchmark <sup>C</sup>	20 minutes	✓	✓	✓	✓	✓	✓	✓	✓	✓

- A Benchmarks (B) and Progress Monitoring (PM) measures vary by window. For example, 2nd grade Word Reading Fluency is a Progress Monitoring measure only. As another example, K Letter Names is only administered once as a Benchmark.
- B Administration times are approximate. Fluency measures individually administered (Letter Names, Letter Sounds, Phoneme Segmenting, Word Reading Fluency, and Passage Reading Fluency). Spanish measures listed individually administered except for Vocabulary.
- C Math measures consist of 20–40 multiple choice math problems.

# Powerful, Intuitive Reports Get You the Information You Need Quickly

The easyCM platform produces detailed reports that provide meaningful data and facilitates a number of instruction functions including:

- ☑ Identifying students at risk
- ☑ Organizing students into intervention groups
- ☑ Monitoring the effectiveness of interventions
- ☑ Progress monitoring of groups or individual students
- ☑ Charting item response data
- ☑ Targeting aim lines for improvement
- ☑ Monitoring movement of students across instructional tiers

Student Name	PRF	VOCAB	PR	Risk	Suggested Progress Monitoring	PR Lexile
1 Cooley, Leilani	80	11	8	Low	Every 2 weeks with PRF	500L
2 Dale, Quintessa	113	14	9	Low	Monthly with VOCAB	560L
3 Hogan, Channing	113	13	9	Low	Monthly with VOCAB	560L
4 Strong, Brittany	203	20	20	Low		1170L
5 Tyler, Cedric	62	12	12	Some	Every 2 weeks with PRF	725L
6 Weiss, Neville	212	20	20	Low		1170L

## Benchmark Assessment Report

View risk analysis reports to identify at-risk students and drive intervention decisions.

Embedded professional learning tutorials.

Risk rating is clearly defined by color.

Percentile and raw score are easily accessible.

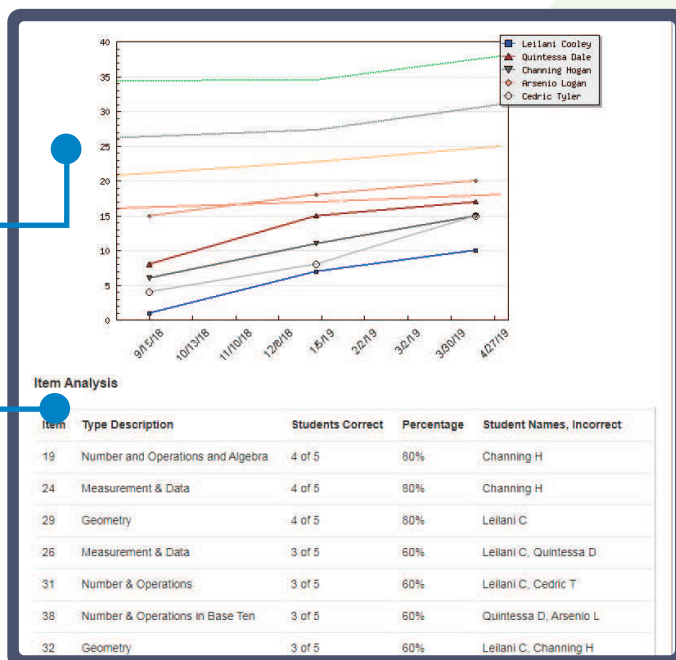
# Group Reports

Generate Group and Item Analysis reports for classroom/instructional planning.

## Group Performance Report

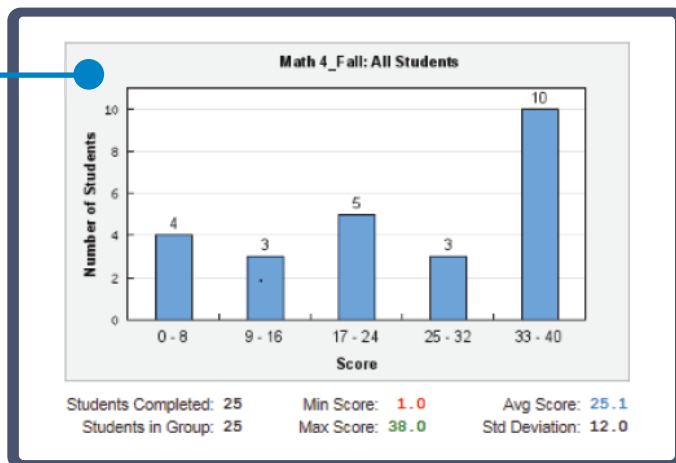
Track performance for up to 10 students.

Informs teachers of the specific assessment objective for each item on the test and lists the items students found easiest to those students found most challenging.



## Group Summary Report

Provides information helpful for grouping students.

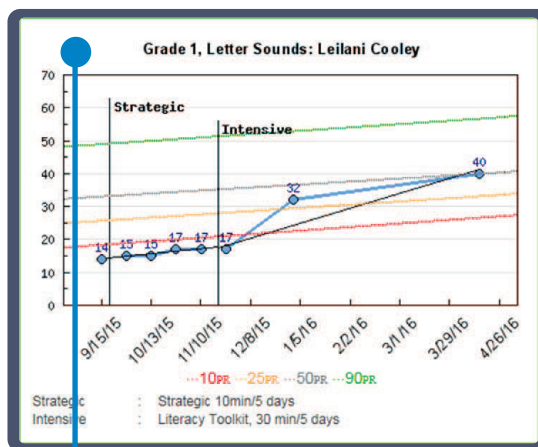




# Individual Reports and Tools

## Word Reading Fluency Report

Student	Data Entry				Save
Albert, Dominique	WRF 3_3				
	I	come	list	name	<b>Mark</b> <input checked="" type="checkbox"/> Incorrect <input type="checkbox"/> Last Word  Save
	he	body	this	still	
	down	word	until	week	
	old	word	world	forest	
	full	/ question /	drawing	does	
	boat	seven	flat	easy	
	follow	once	isn't	pole	
	grain	study	matter	rather	
	size	guess	crowd	while	
	string	/ inflate /	degree	radio	
	weight	followed	ahead	/ believe /	
	page	through	members	fossil	
	probably	reached	sight	invade	
	serve	control	strange	branches	



Online scoring for all fluency-based measures with an optional timer.

Show progress across interventions and across time.

## School Comparison Report

School Comparison | Grade/Measure Comparison

All Grades | Grade K | Grade 1 | **Grade 2** | Grade 3 | Grade 4 | Grade 5 | Grade 6 | Grade 7 | Grade 8

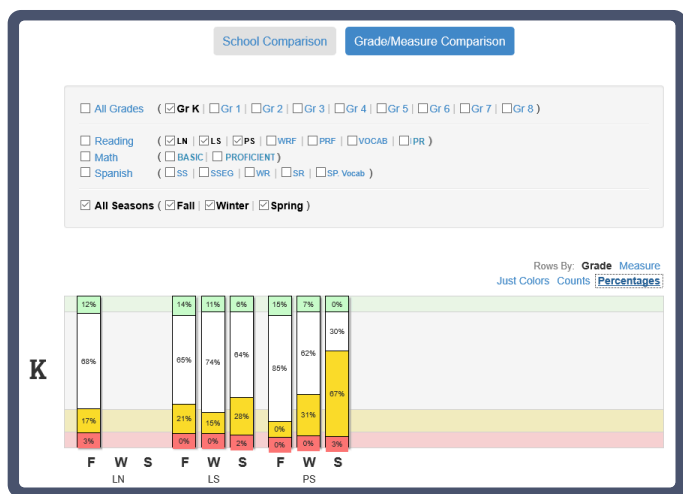
Reading (PRF | VOCAB | PROF Rdg) | Math (BASIC Math | PROF Math)

Just Colors | Counts | Percentages

School	PRF	VOCAB	PROF Rdg
Aristotle...	83%	13%	4%
Turing El...	84%	14%	2%
	91%	9%	0%
	86%	3%	11%
	86%	11%	3%
	86%	14%	0%

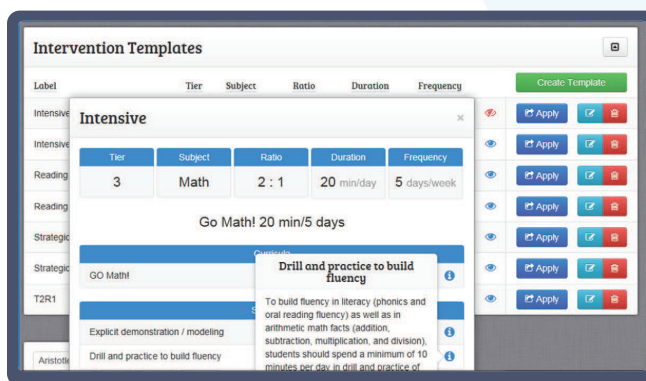


## Grade/Measure Comparison Report



## Intervention Functionality

Intervention templates allow users to easily provide very detailed information about interventions being implemented. Intervention can be applied to individual students or groups of students. District users can create intervention templates for all users to maintain consistency across schools and student reports.



easyCBM® is a trademark of the University of Oregon provided under license to the Riverside Assessments, LLC. Riverside Insights® is a trademark of Riverside Assessments, LLC. © Riverside Insights, LLC. All rights reserved. Printed in the U.S.A. 8/13/21